

Report: Evaluation Summary

OLCC License No. 10087092BDA | ORELAP ID. 4147

545 SW 2nd Street, Corvallis OR. 97333 | 541.257.5002 | services@preelab.com | Preelab.com

Product Description

Client: **Oregon Genetics Inc.**

Product Name: **Purple Afghani**

Matrix: Concentrate

Metrc Source ID: n/a

Metrc Package ID: n/a

License Number: n/a

Report ID: A1077-05

Date Collected: 2019-12-27

Date Received: 2019-12-27

Report Date: 2020-01-06

Tests Requested: Cannabinoid Potency Analysis
Terpene Analysis

Notes: No special conditions were noted during the processing and testing of the sample.

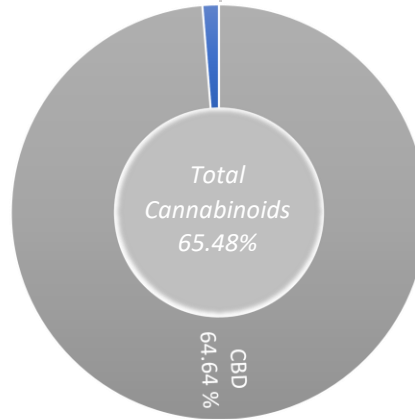
Evaluation Summary

Moisture Analysis | Test Not Requested/Required

Cannabinoid Potency Analysis

Total THC *
0.00 %
0.0 mg/g

Total CBD *
65.37 %
653.7 mg/g



| Abrv. | Dry Wt. % | Dry Wt. mg/g |
|---------|-----------|--------------|
| THCA | < LOQ | < LOQ |
| Δ-9-THC | < LOQ | < LOQ |
| CBDA | 0.84 % | 8.4 mg/g |
| CBD | 64.64 % | 646.4 mg/g |
| CBDVA | < LOQ | < LOQ |
| CBDV | < LOQ | < LOQ |
| CBGA | < LOQ | < LOQ |
| CBG | < LOQ | < LOQ |
| CBN | < LOQ | < LOQ |
| CBL | < LOQ | < LOQ |
| CBC | < LOQ | < LOQ |
| Δ-8-THC | < LOQ | < LOQ |
| THCV | < LOQ | < LOQ |

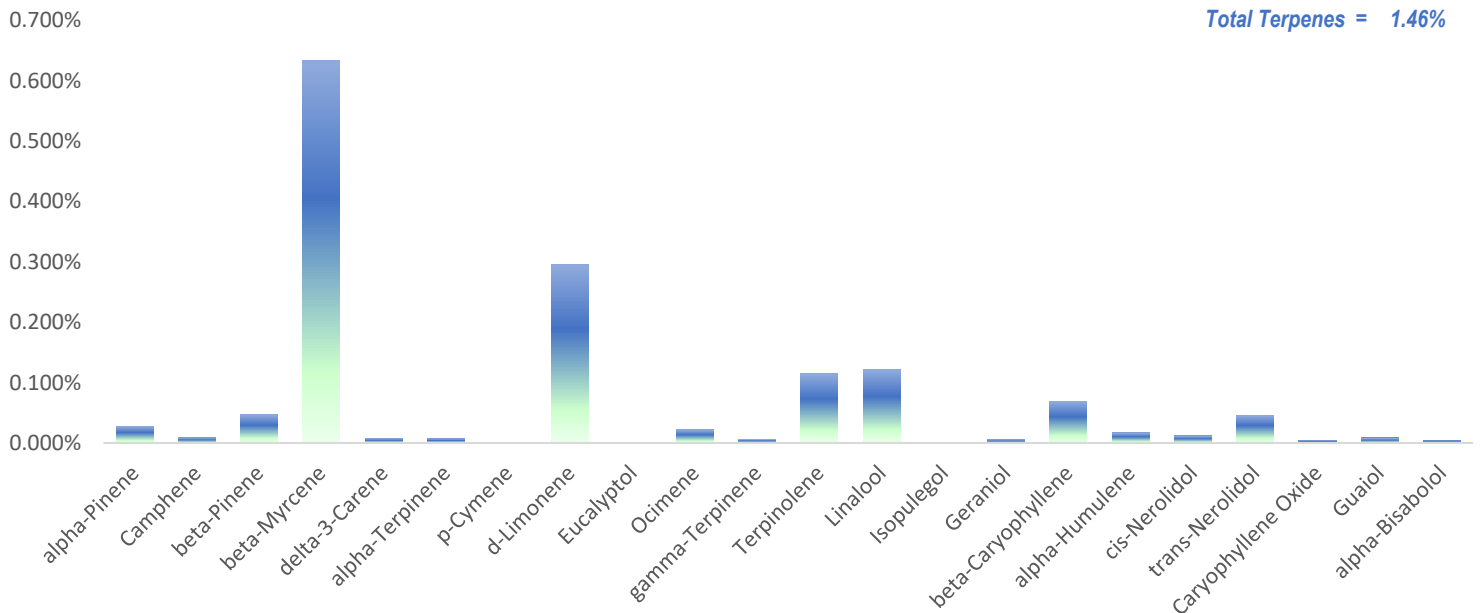
* moisture compensated & adjusted for the loss of carboxylic acid group - OAR 333-064-0100

Report: Evaluation Summary

OLCC License No. 10087092BDA | ORELAP ID. 4147

545 SW 2nd Street, Corvallis OR, 97333 | 541.257.5002 | services@preelab.com | Preelab.com

| Product Description | | Evaluation Summary | | | | | |
|----------------------------|-----------------------------|---------------------------|--|-----------------|-----------|---------------------|-----------|
| Client: | Oregon Genetics Inc. | Terpene Analysis | | Compound | Dry Wt. % | Compound | Dry Wt. % |
| Product Name: | Purple Afghani | | | alpha-Pinene | 0.028% | Terpinolene | 0.115% |
| Matrix: | Concentrate | | | Camphene | 0.009% | Linalool | 0.122% |
| Metrc ID: | n/a | | | beta-Pinene | 0.047% | Isopulegol | 0.000% |
| Lot Number: | n/a | | | beta-Myrcene | 0.633% | Geraniol | 0.006% |
| License Number: | 0 | | | delta-3-Carene | 0.008% | beta-Caryophyllene | 0.069% |
| Date Collected: | 2019-12-27 | | | alpha-Terpinene | 0.008% | alpha-Humulene | 0.017% |
| Date Received: | 2019-12-27 | | | p-Cymene | 0.000% | cis-Nerolidol | 0.012% |
| Report Date: | 2020-01-06 | | | d-Limonene | 0.295% | trans-Nerolidol | 0.046% |
| | | | | Eucalyptol | 0.000% | Caryophyllene Oxide | 0.004% |
| | | | | Ocimene | 0.022% | Guaiol | 0.008% |
| | | | | gamma-Terpinene | 0.007% | alpha-Bisabolol | 0.004% |



Purple Afghani has the highest concentration of the following terpene(s)...

beta-Myrcene

A pleasant aroma. Myrcene is found in mangoes, hops, bay laurel leaves, thyme, lemongrass and basil.



d-Limonene

Found in lemon and orange peels. Limonene is characterized for having a lemon like aroma.



Linalool

Linalool has a lavender aroma. Can be found in lavender, sweet orange flowers and sweet basil.



Dear Oregon Genetics Inc.,

PREE Laboratory received samples on 2019-12-27, which were collected on 2019-12-27 by Caleb Mata. The results in this report are only applicable for the samples listed in this report.

All analyses were performed in accordance with PREE Laboratory NELAP/TNI approved quality control system unless otherwise noted in the case narrative of this report. All quality control data is within the laboratory's predefined acceptance criteria unless otherwise noted in the case narrative of this report.

The testing methods used are of sufficient sensitivity to meet the compliance criteria set in OAR 333-007, however it is the responsibility of the client to utilize the data to comply with standards set in OAR 333-007.

If you have any questions regarding information in this report, please feel free to call 541-257-5002 or email the laboratory at services@preelab.com.



Sardar, Tamzid | Laboratory Director
Corvallis, Oregon

Case Narrative

This report presents the results of the analyses of the sample received on 2019-12-27 and assigned the Laboratory Number of - A1077-05. The subsequent data is only for the sample listed and parameters tested.

This report shall not be reproduced, except in full, without written consent of PREE Laboratory. This report may not be altered in anyway by any other entity beside PREE Laboratory, and will be noted on this case narrative if modifications are made after the initial release.

All analyses were performed in accordance with PREE Laboratory's Quality Control Program. All QC requirements were met, except as noted below.

Analytical comments are noted on the Certificate of Analysis with data flags, and/or recorded below.

Notes:

No special conditions were noted during the processing and testing of the sample.

Report: Evaluation Detail



OLCC License No. 10087092BDA | ORELAP ID. 4147

545 SW 2nd Street, Corvallis OR, 97333 | 541.257.5002 | services@preelab.com | Preelab.com

| Moisture Analysis | Evaluation Detail | | | | | |
|-------------------------------------|------------------------------|------------------------------|---------|-------------|---------|--------|
| | Moisture Analysis | Test Not Requested/Required | | | | |
| Cannabinoid Potency Analysis | Evaluation Detail | | | | | |
| Product Name: Purple Afghani | Cannabinoid Potency Analysis | Compound | Abrv. | Dry Wt. (%) | Dry Wt. | RL (%) |
| Analysis Date: #N/A | Total THC * | Tetrahydro-cannabinolic acid | THCA | < LOQ | < LOQ | 0.5 % |
| | 0.00 % | Delta9 Tetrahydro-cannabinol | Δ-9-THC | < LOQ | < LOQ | 0.5 % |
| | 0.0 mg/g | Cannabidiolic acid | CBDA | 0.84 % | 8.4 | 0.5 % |
| | | Cannabidiol | CBD | 64.64 % | 646.4 | 0.5 % |
| | Total CBD * | Cannabidivarinic Acid | CBDVA | < LOQ | < LOQ | 0.5 % |
| | 65.37 % | Cannabidivarin | CBDV | < LOQ | < LOQ | 0.5 % |
| | 653.7 mg/g | Cannabigerolic acid | CBGA | < LOQ | < LOQ | 0.5 % |
| | | Cannabigerol | CBG | < LOQ | < LOQ | 0.5 % |
| | | Cannabinol | CBN | < LOQ | < LOQ | 0.5 % |
| | | Cannabicyclol | CBL | < LOQ | < LOQ | 0.5 % |
| | | Cannabichromene | CBC | < LOQ | < LOQ | 0.5 % |
| | | Delta8 Tetrahydro-cannabinol | Δ-8-THC | < LOQ | < LOQ | 0.5 % |
| | | Tetrahydrocannabivarin | THCV | < LOQ | < LOQ | 0.5 % |

* moisture compensated & adjusted for the loss of carboxylic acid group - OAR 333-064-0100

Report: Evaluation Detail

OLCC License No. 10087092BDA | ORELAP ID. 4147

545 SW 2nd Street, Corvallis OR. 97333 | 541.257.5002 | services@preelab.com | Preelab.com

Terpene Analysis

Product Name: **Purple Afghani**

Analysis Date: 2020-12-29

Evaluation Detail

| Terpene Analysis | Compound | Dry Wt. % | Dry Wt. (mg/g) | RL % |
|------------------|-----------------------|--------------|--------------------|--------|
| | alpha-Pinene | 0.028% | 0.279 | 0.002% |
| | Camphene | 0.009% | 0.091 | 0.002% |
| | beta-Pinene | 0.047% | 0.473 | 0.002% |
| | beta-Myrcene | 0.633% | 6.327 | 0.002% |
| | delta-3-Carene | 0.008% | 0.080 | 0.002% |
| | alpha-Terpinene | 0.008% | 0.077 | 0.002% |
| | p-Cymene | 0.000% | 0.000 | 0.002% |
| | d-Limonene | 0.295% | 2.954 | 0.002% |
| | Eucalyptol | 0.000% | 0.000 | 0.002% |
| | Ocimene | 0.022% | 0.224 | 0.002% |
| | gamma-Terpinene | 0.007% | 0.066 | 0.002% |
| | Terpinolene | 0.115% | 1.151 | 0.002% |
| | Linalool | 0.122% | 1.216 | 0.002% |
| | Isopulegol | 0.000% | 0.000 | 0.002% |
| | Geraniol | 0.006% | 0.061 | 0.002% |
| | beta-Caryophyllene | 0.069% | 0.693 | 0.002% |
| | alpha-Humulene | 0.017% | 0.172 | 0.002% |
| | cis-Nerolidol | 0.012% | 0.122 | 0.002% |
| | trans-Nerolidol | 0.046% | 0.461 | 0.002% |
| | Caryophyllene Oxide | 0.004% | 0.044 | 0.002% |
| | Guaiol | 0.008% | 0.085 | 0.002% |
| | alpha-Bisabolol | 0.004% | 0.041 | 0.002% |
| | Total Terpenes | 1.46% | 14.615 mg/g | |

Report: Quality Check



OLCC License No. 10087092BDA | ORELAP ID. 4147

545 SW 2nd Street, Corvallis OR. 97333 | 541.257.5002 | services@preelab.com | Preelab.com

| Moisture Analysis | Quality Control Detail | | | | | |
|-------------------------------------|-------------------------------|-------------------------|------------------------|--------------------|------------------|---------------|
| | Moisture Analysis | | | | | |
| Cannabinoid Potency Analysis | Quality Control Detail | | | | | |
| Analysis Date: #N/A | Cannabinoid Potency Analysis | Negative Control (P-BL) | Positive Control (LCS) | Expected Value (%) | Tested Value (%) | Pass Criteria |
| | Tetrahydro-cannabinolic acid | ○ | | < 0.1% | < 0.1% | < 0.1% |
| | Delta9 Tetrahydro-cannabinol | ○ | | < 0.1% | < 0.1% | < 0.1% |
| | Cannabidiolic acid | ○ | | < 0.1% | < 0.1% | < 0.1% |
| | Cannabidiol | ○ | | < 0.1% | < 0.1% | < 0.1% |
| | Cannabinol | ○ | | < 0.1% | < 0.1% | < 0.1% |
| | Tetrahydro-cannabinolic acid | | ● | 100.0% | 91.3% | 80%-120% |
| | Delta9 Tetrahydro-cannabinol | | ● | 100.0% | 93.4% | 80%-120% |
| | Cannabidiolic acid | | ● | 100.0% | 87.5% | 80%-120% |
| | Cannabidiol | | ● | 100.0% | 86.2% | 80%-120% |
| | Cannabinol | | ● | 100.0% | 84.7% | 80%-120% |

Report: Quality Check



OLCC License No. 10087092BDA | ORELAP ID. 4147

545 SW 2nd Street, Corvallis OR. 97333 | 541.257.5002 | services@preelab.com | Preelab.com

Terpene Analysis

Analysis Date: 2020-12-29

Quality Control Detail

| Terpene Analysis | Negative Control | Expected Value (%) | Tested Value (%) | Pass Criteria |
|---------------------|------------------|--------------------|------------------|---------------|
| alpha-Pinene | o | 0.000% | 0.000% | < 0.010% |
| Camphene | o | 0.000% | 0.000% | < 0.010% |
| beta-Pinene | o | 0.000% | 0.000% | < 0.010% |
| beta-Myrcene | o | 0.000% | 0.000% | < 0.010% |
| delta-3-Carene | o | 0.000% | 0.000% | < 0.010% |
| alpha-Terpinene | o | 0.000% | 0.000% | < 0.010% |
| p-Cymene | o | 0.000% | 0.000% | < 0.010% |
| d-Limonene | o | 0.000% | 0.000% | < 0.010% |
| Eucalyptol | o | 0.000% | 0.000% | < 0.010% |
| Ocimene | o | 0.000% | 0.000% | < 0.010% |
| gamma-Terpinene | o | 0.000% | 0.000% | < 0.010% |
| Terpinolene | o | 0.000% | 0.000% | < 0.010% |
| Linalool | o | 0.000% | 0.000% | < 0.010% |
| Isopulegol | o | 0.000% | 0.000% | < 0.010% |
| Geraniol | o | 0.000% | 0.000% | < 0.010% |
| beta-Caryophyllene | o | 0.000% | 0.000% | < 0.010% |
| alpha-Humulene | o | 0.000% | 0.000% | < 0.010% |
| cis-Nerolidol | o | 0.000% | 0.000% | < 0.010% |
| trans-Nerolidol | o | 0.000% | 0.000% | < 0.010% |
| Caryophyllene Oxide | o | 0.000% | 0.000% | < 0.010% |
| Guaiol | o | 0.000% | 0.000% | < 0.010% |
| alpha-Bisabolol | o | 0.000% | 0.000% | < 0.010% |

Definitions

- PQL: Practical Quantitation Limit, this is the smallest amount the analyte can be measured at without estimation.
- Blank: A quality control sample that is free of the analyte being measured.
- Positive Control: A quality control sample with a known amount of the analyte used to demonstrate accuracy. The result is often expressed as a percent recovery.
- Field Duplicate: A second sample collected in the field using the same sampling method as the primary sample. The purpose is to demonstrate that the batch sampled is uniform.
- Action Limit: Analyte levels set by the state of Oregon indicating that follow-up action is necessary.
- Accreditation Status: Indication that the methodology, calibration, and laboratory QC used by PREE Laboratory for an analyte has been evaluated by a third-party auditor and determined to be accurate, precise, and selective.
- ppm: parts per million, equivalent to mg/g and mg/L.
- % Rec.: Percentage Recovery = $[(\text{Amount measured}) / (\text{Known amount})] * 100$
- ND: The sample result is less than the PQL.

Calculations

- Cannabinoid Potency :
Wet WT% = $(\text{Exported concentration ppm}) \times (\text{Dilution}) \times (\text{Extraction Vol./Wet wt mg}) \times 100$
Total THC% = $(\% \text{THCA}) \times 0.877 + (\% \text{THC})$
Total CBD% = $(\% \text{CBDA}) \times 0.877 + (\% \text{CBD})$
Total THC (Dry WT)% = $\% \text{ total THC(wet)} / [1 - (\% \text{moisture}/100)]$
Total CBD (Dry WT)% = $\% \text{ total CBD(wet)} / [1 - (\% \text{moisture}/100)]$